

# Storyteller

EITELJORG MUSEUM MAGAZINE

Eiteljorg Museum of  
American Indians and Western Art  
**Telling Amazing Stories**  
FALL-WINTER 2020-2021

A FRESH LOOK AT YOUR FAVORITES

## *Honoring Women*

### **QUILTS:**

#### **UNCOVERING WOMEN'S STORIES**

Continuing through JAN 3, 2021

#### **POWERFUL WOMEN I: CONTEMPORARY ART FROM THE EITELJORG COLLECTION**

Continuing through MAR 21, 2021

#### **HARD TWIST: WESTERN RANCH WOMEN – PHOTOGRAPHS BY BARBARA VAN CLEVE**

JAN 30-APR 25, 2021

P2

### **JINGLE RAILS: THE GREAT WESTERN ADVENTURE**

PRESENTED BY FIFTH THIRD BANK

NOV. 21, 2020-JAN. 18, 2021

P6



**BEHIND THE SCENES OF  
MUSEUM COLLECTIONS**

Inside front cover

**DÍA DE MUERTOS GOES VIRTUAL**

P5

**GET CREATIVE WITH ARTISTS  
IN RESIDENCE**

P10



## A behind the scenes look at caring for the Eiteljorg's collection

By Liz Ale, collections assistant

As a member of the Eiteljorg Museum's Collections Department, my primary responsibility is caring for the items in the collection. The idea of "care" can vary across cultures and contexts. For example, caring for your grandfather's World War II medal may involve your family passing it around the dinner table to make sure that his accomplishments are never forgotten. Similarly, people from Native American communities may study items from earlier time periods to revitalize customary designs and techniques. Within a contemporary museum context, care involves handling and storing items in ways that ensure they will be preserved for as long as possible. With approximately 10,000 items in the Eiteljorg Museum, our department has no shortage of work to do.

To preserve items in the collection, the Eiteljorg collections staff works to mitigate the effects of "agents of deterioration." Museum professionals use this phrase to describe ultraviolet light, dust, humidity, pests and other elements that can harm museum objects. Agents of deterioration can have different effects depending on the object's composition and the type and length of exposure. For instance, prolonged light exposure can cause organic dyes and watercolor paintings to fade, pests can chew through plant matter and animal skins, and high humidity can cause metal to rust. Mitigating these effects involves maintaining particular

environmental conditions and storing items appropriately.

### Temperature, humidity, light

Scientific studies show that certain environmental conditions help to slow the rate at which museum objects deteriorate. Although optimal ranges vary based on material, most items are best kept at 70 degrees Fahrenheit and 50 percent relative humidity (RH). Most of us are familiar with what 70 degrees feels like (as it's an objectively perfect temperature for a spring day). RH is a bit harder to conceptualize. Technically speaking, RH is the amount of water vapor in the air relative to the maximum amount of moisture the air can hold at a given temperature. RH is why an 85 degree day in the arid Southwest is often more pleasant than an 85 degree day in muggy Florida. In my experience, 50 percent RH feels like an unnoticeable rate of humidity.

Museums must also keep light levels (or "lumens") low to prevent damage. The Eiteljorg uses low-lumen producing LEDs, filters that remove harmful UV rays from incandescent bulbs and motion-activated lights to help protect collections.

### Preserving for the future

The way we store items while they are off display also influences how long they will preserve. At the Eiteljorg, we use scientifically proven storage methods. Oil and acrylic paintings are stored upright on racks, large textiles are rolled onto tubes to prevent creasing



In the Eiteljorg Museum's collections department, Collections Assistant Liz Ale examines an Ojibwe beaded vest that is among the Great Lakes Native American items the museum recently acquired from art collector Richard Pohrt, Jr. Image by Aaliyah Hunt.

and sculptures are placed onto heavy-duty shelving. Irregularly shaped items often require custom-made storage enclosures. These handmade containers may support items that cannot stand on their own (such as rounded pieces of pottery), relieve pressure on fragile items, or protect objects from light and dust. We use what are called "archival materials" to create these enclosures. Archival materials such as unbleached cotton fabric and acid-free tissue paper are inert, meaning that they will not warp, discolor or otherwise harm the objects they touch.

The next time you walk through the Eiteljorg Museum's galleries, take a moment to consider the context in which the artwork is displayed. Are the lights dimmer than you would expect? Does the air around you feel temperate? Is the object on a mount that supports all of its fragile pieces? You now know that all of these small details are part of a larger goal: making sure that our collection is preserved well into the future.



## Eiteljorg

### Storyteller

Eiteljorg Museum Magazine

**Winner of the Award of Honor from the Public Relations Society of America — Hoosier Chapter in 2019 and 2020**

Volume 15, Number 3

#### President and CEO

John Vanausdall

#### Vice President for Advancement

Nataly Lowder

#### Director of Marketing and Communications

Bert Beiswanger

#### Editor and Writer

Bryan Corbin

#### Design

Honeymoon Image & Design

#### Contributing Writers

Kay Hinds

Elisa Phelps

Nataly Lowder

Alisa Nordholt-Dean

Lezlie Laxton

Liz Ale

Cassandra Sanborn

Sara Spieth

Caroline States

Eduardo Luna

#### Contributing Photographers

Eiteljorg Museum marketing staff, interns and archives

Hadley Fruits Photography

Alisa Nordholt-Dean

Image of Frank (Mitch) Battese

artwork courtesy of the artist

Rob Banayote

Zack Dobson

Jessica Strickland Photography

Addison Doty, courtesy of the

Wheelwright Museum of the American Indian

#### Editor's Note

Every effort is made to ensure that exhibition images published in *Storyteller* magazine accurately reflect the artworks on exhibit at the Eiteljorg Museum during the dates announced and promoted. Due to state and local public health requirements, details of announced events and exhibitions might change too late for the *Storyteller's* publication deadlines. For comments or questions, call (317) 275-1315 or email bcorbin@eiteljorg.com.



## Eiteljorg is the place to visit for fall and winter experiences

Friends,

The year 2020 will certainly go down as one of the most challenging for our world, and the Eiteljorg has not been immune to the circumstances that have affected us all. But I am pleased that the museum and its staff have responded to these challenges with innovation, enthusiasm and hard work, and I am optimistic about what the future holds.

First, let me say how thrilled we are to be open and serving the public. We are thankful that many guests returned as soon as the museum reopened to visitors June 20 after the three-month closure. To comply with state and local public health requirements, we now ask that visitors wear face coverings, sanitize their hands and socially distance from others. Our housekeeping staff has gone to extraordinary lengths to clean and sanitize the museum building each day. The safety of our guests, staff and families is paramount.

I want to thank those of you who have already visited the museum and say how much we appreciate your understanding and support for these health and safety measures as you enjoyed *Quilts: Uncovering Women's Stories* and our other exhibitions. Experiencing art in a museum can be a great relief from the frustration of being homebound and isolated due to the pandemic. The Eiteljorg has compelling experiences scheduled for fall and winter. *Powerful Women: Contemporary Art from the Eiteljorg Collection* celebrates the work of women artists of Native American and other diverse backgrounds. As Elisa Phelps describes on page 3, it's part of the museum's 2020-21 theme,

*Honoring Women*. Our holiday model train attraction, *Jingle Rails: The Great Western Adventure*, is popular with families; it returns for an 11th year Nov. 21.

Eiteljorg Museum staff and Western Art Society members showed tenacity and creativity to reimagine the 15th annual *Quest for the West*® Art Show and Sale as a virtual experience, Sept. 11-12. While we missed seeing our friends — the *Quest* artists and art collectors — in person this year, we are pleased with the interest in outstanding Western art during the virtual sale weekend. Congratulations to Indiana artist Mark Kelso whose painting *Tearin' It Up* was chosen as the Harrison Eiteljorg Purchase Award winner.

As you can imagine, the spring shutdown of the local tourism industry dealt a painful shock to the arts and culture community: museums, performing arts organizations and artists themselves. We all are fortunate that the Arts Council of Indianapolis, Lilly Endowment Inc., Indiana Arts Commission, Arts Midwest, the Indiana Destination Development Corporation, private foundations and federal agencies stepped up to assist arts organizations during the emergency, by offering grants to help meet financial needs. Completing and submitting complicated grant applications is a big job, and for that, I'm appreciative of our development manager, Sally Dickson, who manages grant opportunities.

Additionally, some of our most devoted members and patrons, including the Eagle Society, have generously supported the museum in recent months, some renewing their memberships early, and



Mark Kelso, Bargersville, Ind. *Tearin' It Up*, 2020, oil on panel, 36 x 48 inches  
2020 *Quest for the West*® Harrison Eiteljorg Purchase Award

for that we are grateful. While the Eiteljorg has long relied on a group of dedicated volunteers, most have not been able to volunteer their services at the museum during the pandemic, so we appreciate their patience and loyalty as we anticipate the date when they can return in force.

Another defining aspect of 2020 is that America has begun a long-overdue process of coming to terms with systemic racism in our society, and we are on a path for meaningful change. The Eiteljorg Museum is dedicated to providing exhibitions, programs and community gatherings that celebrate diversity in America. We have not been afraid to tackle head-on challenging topics related to racism, inequality and injustice in the history of the American West and the experiences of Indigenous peoples. We have been a place for people of different backgrounds to engage in meaningful dialogue and to celebrate our differences and embrace our commonalities. The Eiteljorg remains committed to playing a vital role in making our community, state and nation a more equitable place to live. We must all keep this momentum for change alive to eliminate racism in our society.

We closely monitor the public health situation, and while we hope that circumstances will never again force museums to temporarily close, we learned a great deal from the earlier closure. If required, we would be able to spring into action with our new web page, **EiteljorgAtHome**, and keep museum supporters fully supplied with virtual art and programming.

We hope that won't be necessary, as we very much would like see you in person at the museum. I am grateful to all of you who visited recently, became museum members or renewed or upgraded your memberships, donated to the Eiteljorg, shopped at the Museum Store or dined at the Museum Café. Your support is why the Eiteljorg is able to celebrate the art, history and cultures of Native America and the American West through fascinating exhibitions and relevant public programming. With your help, the Eiteljorg Museum will continue to carry out its mission.

Sincerely,

  
John Vanausdall  
President and CEO  
Eiteljorg Museum

#### On the cover:

Marie K. Watt (Seneca, born 1967) *Braid* (detail), 2005, reclaimed wool blankets, satin binding  
Museum purchase from the Eiteljorg Contemporary Art Fellowship  
Included in the exhibition *Powerful Women I: Contemporary Art from the Eiteljorg Collection* continuing through March 21

*Jingle Rails: The Great Western Adventure*  
Close-up of one of the G-scale model trains.  
Image courtesy of Zach Dobson Photography





The first rotation of the new exhibition *Powerful Women: Contemporary Art from the Eiteljorg Collection*, above and right, continues through March 21 at the Eiteljorg Museum.



#EJPowerfulWomen

# A continuing museum theme of *Honoring Women* across generations and backgrounds

By Elisa Phelps, Eiteljorg vice president and chief curatorial officer

Nationwide celebrations of the 100th anniversary of women's suffrage prompted the Eiteljorg Museum to designate 2020 as a year of honoring women and to develop a slate of exhibits and programs focusing on women and their stories. When COVID-19 interrupted everyone's plans with closures and quarantines, it forced the museum to postpone programs and rethink the exhibit schedule. The scheduling changes have afforded us the opportunity to continue our focus on women, their stories, and their art into 2021.

We are fortunate the individuals and institutions lending the items featured in **Quilts: Uncovering Women's Stories** have allowed us to extend the exhibit through Jan. 3, 2021. The three-month-long closure of the museum pushed us to find ways to make the exhibit accessible online, and you can now enjoy a personal tour of the exhibit by the curator of Western art, history and culture, Johanna M. Blume, at <https://eiteljorg.org/exhibitions/virtualeiteljorg/>.

The exhibit **Powerful Women: Contemporary Art from the Eiteljorg Collection**, which opened in September, features works created by Native women artists. When asked where the idea for the exhibit originated, curator of contemporary art Jennifer Complo McNutt said, "Over the last 30 or so years, I have seen women like Kay WalkingStick, Jaune Quick-to-See Smith, Marie Watt and Wendy Red Star change the way we perceive Native women, and have seen them change the world. The women in this exhibition exemplify courage and commitment. Each has



Luzene Hill (Eastern Band of Cherokee, born 1946) *Retracing the Trace*, 2011-2015, satin cord, ink, pastel  
Museum purchase from the Eiteljorg Contemporary Art Fellowship.

made extraordinary contributions to their families, communities, the art world — the world."

**Hard Twist: Western Ranch Women**, featuring the stunning black-and-white photographs of Barbara Van Cleve, was initially scheduled to open in November. We are grateful to the organizing institution, the National Cowgirl Museum and Hall of Fame, for allowing us to postpone opening until Jan. 30, 2021. The National Cowgirl Museum "honors and celebrates women, past and present, whose lives

exemplify the courage, resilience and independence that helped shape the West," its mission statement says. That charge set me thinking about the Hall of Fame honorees and their stories.

Honorees range from ranchers, educators, executives, entertainers, rodeo cowgirls and humanitarians, to artists including Georgia O'Keeffe, Maria Martinez and Laura Wilson, each of whom is represented in the Eiteljorg collection. Some of the honored women's stories are familiar — like those of Supreme Court Justice Sandra Day O'Connor, author Willa Cather and Wilma Mankiller, the first woman elected to serve as principal chief of the Cherokee Nation. The stories of other Western women, including Clara Brown, Mary Colter and Sylvia Mendez may not be as familiar but are equally worth knowing.

Clara Brown was born enslaved in Virginia. At the age of 35, she was sold at auction and separated from her husband and children. Freed by her third owner, she crossed the Plains during the 1859 Colorado gold rush and settled in the mining town of Central City where she opened the town's first laundry.

(Continued on page 4)



The Eiteljorg exhibition *Quilts: Uncovering Women's Stories* has been extended to Jan. 3, 2021.

#EJQuilts

## Honoring Women

HONORING WOMEN IS SPONSORED BY:



QUILTS: UNCOVERING WOMEN'S STORIES IS ALSO SPONSORED BY:



WITH ADDITIONAL SUPPORT FROM:

Quilts Plus and Crimson Tate



(Continued from page 3)

A successful businesswoman, she invested in mines and real estate. The profits she made went towards searching for her family and helping newly freed slaves relocate. "Aunt" Clara Brown became known for never turning away anyone in need. Her life is commemorated with a stained glass window in the rotunda of the Colorado state capitol.

Mary Colter was an architect at a time when very few women pursued the profession. For more than 40 years, Colter served as a designer and architect for the Fred Harvey Company. The Harvey Company managed a large portfolio of restaurants, hotels, and hospitality-related enterprises in the Southwest and was the concessionaire for the Santa Fe Railway. Colter's designs incorporated site-specific natural materials and were instrumental in defining the rustic style and aesthetic of National Park structures. Her best-known work can be seen at the Grand Canyon, where four of her structures are designated as National Historic Landmarks.

Sylvia Mendez is an integration pioneer. Of Mexican and Puerto Rican heritage, at the age of eight she was at the center of the 1946 case *Mendez v. Westminster*, which desegregated schools in California several years before the landmark *Brown v. Board of Education* decision. The Mendez decision paved the way for desegregation in the rest of the country. Following the example of her parents, Mendez has continued to fight for educational equality and received the Presidential Medal of Freedom in 2011.

These stories and those of the women whose work is featured in *Quilts: Uncovering Women's Stories* and *Hard Twist* represent the diversity of women's experiences and the strength that sustains and motivates women in the West and Native America to persevere, advocate, create and lead.

**Online Extra:** For more about *Honoring Women*, visit the Eiteljorg Blog: <https://eiteljorg.org/our-story/news/>

#EJHonoringWomen



Barbara Van Cleve (American, born 1935), *Melody Harding, Bar Cross Ranch, WY, 1995*, Photograph, 51.5 x 41.5 inches  
Image courtesy of *Hard Twist: Western Ranch Women* by Barbara Van Cleve from the collection of the National Cowgirl Museum and Hall of Fame, Fort Worth, Tex.



Skawennati (Mohawk, born 1969) *TimeTraveller™: Hunter Kissing Karahkwenhawi* (production still), 2010  
Inkjet on poly banner  
Museum purchase from the Eiteljorg Contemporary Art Fellowship.

## Now is the time to renew or upgrade your membership

By Cassandra Sanborn, membership/donor engagement manager

Recently while talking to a friend, I mentioned the Eiteljorg's exhibition *Quilts: Uncovering Women's Stories*. She is being careful about how she socializes right now, so we haven't seen each other since March. After we talked about the exhibit, though, she told me how much she wants to see it. I offered to host her on a trip to the museum using my membership, and told her about the Eiteljorg's safety protocols.

Now we're planning a visit to the museum! I don't just get to share an exhibit with a friend, I can visit with her in a place where she feels comfortable and secure.

I have used my membership less this year than I have in the past, but this experience has reminded me that my membership is about more than my own visits to the museum. Because of my membership, I can share the art, history and culture that I love with the people that I love.

As an Eiteljorg member, you can bring up to two guests with you each time you visit the museum — and, if you upgrade to higher membership levels, you can bring additional guests with you. Renewing your membership now gives you access to another year of exciting exhibits and engaging programs that you can share. If you have any questions about renewing your membership, you can call me at 317.275.1360 or email me at [csanborn@eiteljorg.com](mailto:csanborn@eiteljorg.com).



The exhibition *Quilts: Uncovering Women's Stories* is open through Jan. 3, 2021 at the Eiteljorg Museum.

OCT 28–NOV 2

## Día de Muertos Celebration goes virtual

Local favorites and international acts are highlights of this year's celebration

By Alisa Nordholt-Dean, Beeler Family director of education and public programs

While nothing can replace the experience of watching colorful twirling *folklórico* dancers, taking selfies with immaculately dressed and made-up Catrinas and Catrins, and indulging in a loaf of *pan de muerto*, this year's completely virtual *Día de Muertos* Celebration will offer exciting new opportunities — all from the comfort of your own sofa.

Nopal Cultural's carefully curated lineup will feature classic local favorites — performances by Grupo Folclórico Macehuani and Ballet Folklorico Mosaicos, and art-making with Richard Gabriel Jr. Without the constraints of time and travel, an incredible variety of performances, art, cultural exchanges and educational experiences from across North America will be at your fingertips. We are also excited to partner with the National Museum of Mexican Art in an altar (*ofrenda*) presentation made by artist Juan Chawuk.

Highlights include an artist talk by members of the Instituto Grafico de Chicago, performances by Mexican singer Roselián and Mexican American musicians A Flor de Piel, a conversation with Mexican visual artist and activist Mustang Jane and more. This year's celebration will span nearly a week, concluding on Monday, Nov. 2, the traditional culmination of the *Día de Muertos* holiday.

See the complete schedule on our website at [eiteljorg.org/dayofthedead](http://eiteljorg.org/dayofthedead).



DÍA DE MUERTOS IS SPONSORED BY:



## La Celebración de Día de Muertos será virtual

Los actos favoritos locales e internacionales son lo más destacado de la celebración de este año

Spanish translation by Eduardo Luna

Nada puede reemplazar la experiencia de ver cómo giran los bailarines de coloridos bailes folclóricos; tomarse "selfies" con Catrinas y Catrines con vestuarios y maquillajes impecables, y disfrutar de una pieza de pan de muerto.

La celebración del Día de Muertos de este año será completamente virtual y ofrecerá nuevas y emocionantes oportunidades — todo desde la comodidad de su propio sofá.

La alineación cuidadosamente seleccionada por Nopal Cultural contará con los clásicos favoritos locales: actuaciones del Grupo Folclórico Macehuani, Ballet Folklorico Mosaicos, y creación de arte con Richard Gabriel Jr. Sin las limitaciones de tiempo y traslado, una increíble variedad de actuaciones, arte, intercambios culturales y experiencias educativas de toda Norteamérica estarán al alcance de sus manos. También estamos emocionados de asociarnos con el Museo Nacional de Arte Mexicano en una presentación de un altar (*ofrenda*) construido por el artista Juan Chawuk.

Los aspectos más destacados incluyen una charla artística con miembros del Instituto Grafico de Chicago, actuaciones de la cantante mexicana Roselián y músicos mexicanoamericanos A Flor de Piel; una conversación con la artista visual mexicana y activista Mustang Jane; y más. La celebración de este año durará casi una semana y concluirá el lunes 2 de noviembre, la culminación tradicional de la festividad del Día de Muertos.

Consulte el calendario completo en nuestro sitio web en [eiteljorg.org/diademortos](http://eiteljorg.org/diademortos).





## Jingle Rails pulls into the station with miniature versions of the Indianapolis Motor Speedway, Indiana State Fair and more

By Sara Spieth, Eiteljorg marketing and communications intern

Escape from being stuck at home and experience the wonders of the American West as well as the Indiana State Fair and Indianapolis 500 — all in miniature — by visiting the Eiteljorg Museum. The whimsical model train attraction *Jingle Rails: The Great Western Adventure* has become one of Indianapolis's most beloved holiday traditions for all ages, and it returns to the Eiteljorg on Nov. 21 for its 11th holiday season.

Follow nine G-scale model trains as they chug across nearly 1,200 feet of miniature track, each passing backdrops with scenes of landmarks

created out of all-natural materials such as tree bark, leaves, pine cones and acorns. Some of the trains represent actual trains that connected America. Guests can watch as the trains ramble over trestles and through tunnels, and wind around the miniature landscapes decorated with holiday lights. Starting with the downtown Indianapolis skyline including Monument Circle and Lucas Oil Stadium, the *Jingle Rails* journey takes visitors to iconic landmarks of the West, including Las Vegas, the Grand Canyon, Yellowstone National Park, Mount Rushmore and more.

**To make the *Jingle Rails* experience as safe as possible, the Eiteljorg has put in place timed ticketing, a one-way visitor path through the layout and will limit the number of visitors in the space at one time. Tickets must be ordered in advance.**

The appeal of *Jingle Rails* is multigenerational: Children of all ages to adults love model trains, and parents and grandparents love seeing the representations of national parks that may remind them of a favorite family vacation

out West. But in the moment, people simply love creating magical family holiday memories.

Anyone who missed experiencing the Indiana State Fair in 2020 can again enjoy a miniature version of the fairgrounds at *Jingle Rails*. Steve Sipe, the Eiteljorg's director of exhibition and graphic design, was excited to note, "This season we are highlighting the Indiana State Fair in its original location within *Jingle Rails* for a more enriching experience of the scene, since the actual fair was cancelled." Favorite fair landmarks and amusement rides are depicted in miniature, including the iconic Ferris wheel.

And for fans of the Indy 500 who missed experiencing the sights and sounds of the Brickyard in 2020, a captivating miniature version of the Indianapolis Motor Speedway will be back on display at *Jingle Rails*, one of a series of scenes made possible in recent years by the Kortepeter family. The IMS scene features a working slot-car track with authentic Race Day sounds, along with the Pagoda, the Yard of Bricks, the Grandstands, the Goodyear blimp overhead and more, all cleverly crafted out of woody materials.

*Jingle Rails* would not be possible without the help of many supporters, such as presenting sponsor Fifth Third

Bank, whose downtown building and custom train engine are featured in the layout.

The creative team at Applied Imagination in Alexandria, Ky. — the botanical architecture firm founded by Paul Busse — designed and built *Jingle Rails* and its additions. Each year, they assemble the track and backdrops in the museum's Clowes Sculpture Court in the week before the attraction opens. During the 10-week run of *Jingle Rails*, a hard-working team of volunteer model train enthusiasts, the "train guys," ensure the model trains run smoothly and help answer visitors' questions.

The nationally acclaimed *Jingle Rails* astounds thousands

of visitors each year and has been featured in *USA Today*, *Midwest Living* and the *Chicago Tribune*.

One of the most affordable local holiday attractions, *Jingle Rails* is included in regular museum admission. Members are free, but need to reserve their times online. Children ages 4 and under have free admission. *Jingle Rails: The Great Western Adventure* will be open from Nov. 21–Jan. 18.

To enter *Jingle Rails*, all visitors — museum members and non-members — are required to reserve timed tickets in advance. Check [Eiteljorg.org/JingleRails](https://www.eiteljorg.org/JingleRails) for details.

ADVANCE TICKET RESERVATIONS REQUIRED at [Eiteljorg.org/JingleRails](https://www.eiteljorg.org/JingleRails)

### JINGLE RAILS: THE GREAT WESTERN ADVENTURE

NOV 21, 2020– JAN 18, 2021

PRESENTED BY:  FIFTH THIRD BANK

SPONSORED BY:  KATZ SAPPER & MILLER  ONEAMERICA

The Kortepeter Family  
The Sunrise Foundation, a fund of the Indianapolis Foundation

#JingleRails



# Calendar

We're adding new programs and events all the time. Visit [www.eiteljorg.org](http://www.eiteljorg.org) and sign up for our e-newsletter to stay up to date on Eiteljorg Museum happenings.

Museum hours are 10 a.m. to 5 p.m. Monday through Saturday, and noon to 5 p.m. Sunday. The Museum Cafe is open from 11 a.m. to 3 p.m. Monday through Saturday, and noon to 3 p.m. Sunday, with a limited menu.

**NOTE TO VISITORS:** The events and dates listed below were in effect at the time of publication. Due to the changing public health situation that can cause events to be postponed, please check [www.eiteljorg.org](http://www.eiteljorg.org) before your visit for the latest information on activities taking place at the museum.

## CONTINUING

### THROUGH FEB 9, 2021

#### **Please Touch! The Sculptures of Michael Naranjo**

Experience a multisensory exhibition of beautiful bronze sculptures by renowned artist Michael Naranjo (Santa Clara Pueblo), a blind sculptor whose compelling life story is reflected in his work.



Michael Naranjo (Santa Clara Pueblo, born 1944) *Freedom*, 2005, bronze, edition of 10, 12.5 x 11 x 7 inches. Loan courtesy of Michael and Laurie Naranjo.

## Honoring Women

### THROUGH JAN 3, 2021

#### **Quilts: Uncovering Women's Stories**

Explore the diverse experiences of women in the West and Native America through this popular exhibition of quilts created by women artists from the 19th century to the present.

The exhibition *Quilts: Uncovering Women's Stories* has been extended to Jan. 3, 2021. Watch a TV news segment about Quilts at this link: <https://bitly/3aG61f9>



### THROUGH MAR 21, 2021

#### **Powerful Women I: Contemporary Art from the Eiteljorg Collection**

The museum's newest exhibition, *Powerful Women*, highlights and celebrates diverse women artists in contemporary art. The first rotation of the exhibition honors and acknowledges the contributions of Native women artists to their communities, the contemporary Native art community and the art world in general. A second rotation of *Powerful Women* is April 18-Oct. 3, 2021.



Bonnie Devine (Ojibwa, born 1952) *Canoe*, 2003, graphite on paper, thread, twine, beads. Museum purchase from the Eiteljorg Contemporary Art Fellowship

Monday

### OCT 12

10 a.m.–5 p.m.

#### **Indigenous Peoples Day**

Event details coming soon; check [www.eiteljorg.org](http://www.eiteljorg.org).

Friday

### OCT 23

Noon

#### **Virtual Artist Talk Series: DG House (Cherokee of NE Alabama)**

An award-winning painter, photographer and printmaker, Montana artist DG House is known for her iconic blue bears. Visit [www.eiteljorg.org](http://www.eiteljorg.org) to register for this free program.

Friday

### NOV 6

Noon

#### **Virtual Curator's Choice: Artist in Residence—Karen Ann Hoffman**

Artist Karen Ann Hoffman (Oneida of Wisconsin) creates beautiful decorative pieces following the traditions of Iroquois raised beadwork. Visit [www.eiteljorg.org](http://www.eiteljorg.org) to register for this free talk.

#### **Western Book Club**

The Western Book Club meets to discuss an array of titles spanning and sometimes pushing the limits of what constitutes a Western. Meetings will be via Zoom until further notice. To attend, contact Sandy Schmidt at [sschmidt@eiteljorg.com](mailto:sschmidt@eiteljorg.com).

Thursday

### OCT 22

1 p.m.

Discuss *Secret Knowledge of Water* by Craig Childs.

Thursday

### NOV 19

1 p.m.

Discuss *Short Night of the Shadow Catcher* by Timothy Egan.

Friday

### JAN 29

Noon

The book selection for 2021 will be announced soon.

### OCT 28–NOV 2

#### **Día de Muertos (Day of the Dead) Virtual Celebration**

Virtually experience *Día de Muertos* (Day of the Dead) with the Eiteljorg and partner Nopal Cultural. Learn the history behind the holiday, watch musical and dance performances, listen to artist talks, watch demonstrations, and also visit our resource page to explore more about this beautiful tradition. Visit [eiteljorg.org/diademuertos](http://eiteljorg.org/diademuertos) for details and the complete schedule.



Wednesday

### NOV 11

1 p.m.

#### **Virtual Artist Talk Series: Navajo Quilting with Thompson Chicharello (Canoncito Band of Navajos)**

Visit [www.eiteljorg.org](http://www.eiteljorg.org) to register for this free program.

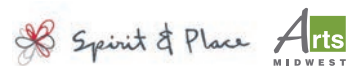
Thursday

### NOV 12

5:30.–7 p.m.

#### **Since the Beginning(s): Native American Oral Traditions and Art**

Native American artists, culture bearers and experts discuss how origin stories/traditions are expressed through art in this Spirit & Place Festival virtual event. Visit [www.eiteljorg.org](http://www.eiteljorg.org) for details.



Friday

### NOV 20

Noon

**Virtual Artist Talk Series: Karen Ann Hoffman (Oneida of Wisconsin)**  
Karen Ann Hoffman specializes in Iroquois raised beadwork. Free; visit [www.eiteljorg.org](http://www.eiteljorg.org) to register.



Unknown photographer *Gene Kloss operating a printing press*, photograph. Image courtesy of Smithsonian Archives of American Art, Gene Kloss Papers, 1934-1941

### NOV 21–JAN 18

#### **Jingle Rails: The Great Western Adventure**

Experience the wonders of the American West right here at the Eiteljorg Museum. *Jingle Rails*, Indy's most affordable family holiday attraction, returns for its 11th year. Model trains pass through whimsical backdrops made of all-natural materials, including miniatures of the Indiana State Fair and Indianapolis Motor Speedway. Included with regular admission, but advanced timed ticketing is required.



ADVANCED TIMED TICKETS REQUIRED FOR ALL VISITORS  
Members are free, but must order pre-registered timed tickets.

### NOV 21–DEC 7

#### **Toy Drive: Toys for Turtle Mountain**

Please consider donating new toys to the Toys for Turtle Mountain's Annual Toy Drive for children of all ages who reside on the Turtle Mountain Band of Chippewa Indians Reservation in Belcourt, North Dakota. To make the process easier and limit contact, we are accepting both in-person and online donations. To donate online, simply purchase a toy from your favorite online retailer and have it shipped directly to the Friends of Turtle Mountain. Visit [www.friendsofturtleisland.org/how-you-can-help](http://www.friendsofturtleisland.org/how-you-can-help) for details.

Friday

### DEC 4

Noon

#### **Virtual Curator's Choice: Jingle Rails**

Join Steve Sipe, director of exhibition and graphic design, for an inside look at *Jingle Rails*, the museum's annual holiday train display. Check [www.eiteljorg.org](http://www.eiteljorg.org) for details.

Monday

### JAN 18

10 a.m.–5 p.m.

**Martin Luther King Jr. Day**  
Join us for the final day of *Jingle Rails*. Reserve your timed admission at [Eiteljorg.org/JingleRails](http://Eiteljorg.org/JingleRails).

## Honoring Women

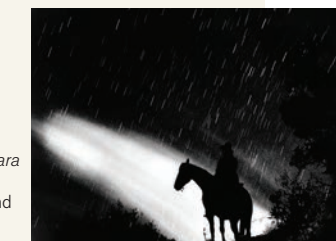
Saturday

### JAN 30

#### **Exhibition Opening: Hard Twist: Western Ranch Women – Photographs of Barbara Van Cleve**

This traveling exhibition of documentary-style photographs explores women's diverse experiences in the West. *Hard Twist* is a celebration of women of the range, their ranches and the breathtaking Western landscapes in which they live. It continues through April 25.

Barbara Van Cleve (American, born 1935) *Star Shower*, 1993. Photograph. 41.5 x 51.5 inches. Image courtesy of *Hard Twist: Western Ranch Women* by Barbara Van Cleve from the collection of the National Cowgirl Museum and Hall of Fame, Fort Worth, Tex.



Friday

### FEB 5

#### **Curator's Choice: Hard Twist**

Join us at noon on the first Friday of the month for a 20-minute talk led by an Eiteljorg curator. Some events will be virtual; check [www.eiteljorg.org](http://www.eiteljorg.org) for details.

Calendar of Events compiled by Caroline States, marketing and communications intern



# Calendar

(Continued from page 9)

## ARTISTS IN RESIDENCE

The Eiteljorg's artist in residence program has played a critical role in bringing Native American artists from across North America to the museum and to classrooms, libraries and senior centers in the local community. This year, due to the COVID-19 pandemic, artist experiences will look slightly different, but will be no less impactful. Visiting artists will provide a mix of small onsite and virtual online offerings with opportunities to participate in person or from afar. Check [www.eiteljorg.org](http://www.eiteljorg.org) for details.

### OCT 6–24

#### DG House (Cherokee of NE Alabama), painting, drawing, prints

Contemporary Native American Artist DG House specializes in painting, drawing, photography and prints and is an artist in residence in both Grand Teton and Yellowstone National Parks.



### OCT 26–30

#### Richard Gabriel Jr., Spanish Colonial tinwork

Richard Gabriel resides in Tijeras, New Mexico and operates a local studio where he creates traditional Spanish Colonial tinwork and paints, an element he often includes in his tinwork. Gabriel teaches tinsmithing at Santa Fe Community College.



### NOV 3–21

#### Karen Ann Hoffman (Oneida of Wisconsin), beadwork

Karen Ann Hoffman creates beautiful decorative pieces following the traditions of Iroquois raised beadwork, a style of Woodland beadwork that embodies Iroquois worldviews.



## Answering your questions about supporting the museum during an unusual time

One thing about 2020, it will be one for the history books. When the Eiteljorg looks back many years from now, I'm sure it will be obvious that friends of our museum, people like you, truly loved everything it represents. You are the reason we will come out on the other side of this unusual situation.

In many conversations I've had this year with our supporters, three questions keep rising to the top. I thought I'd answer those in this edition of *Storyteller*.

### Q: "What is the best way to financially assist the museum during the difficulty caused by the pandemic?"

**A:** The best way to help is a financial gift to the "greatest needs of the museum." This will give the museum flexibility to use your gift where it is needed most. This can be done by mailing in a check with a note of your intentions in the enclosed envelope provided in this issue. Email or call me for a conversation. Through this conversation, I can take your gift over the phone and direct it to the area of your choice. You can also go to our website, <https://eiteljorg.org/give/donate/>, and give online to the annual fund.

### Q: "Does the museum accept gifts of stock?"

**A:** Yes. A gift of stock is another tool at your disposal. The stock has to have appreciated more than one year before you can gift it. According to Fidelity Charitable, "You are actually giving 20 percent more than if you sold the stock and then made a cash donation." The other positive side of this tool is, if you give the stock directly to the museum, you will not have to pay capital gains on the gift. I recommend you speak with your financial planner or tax adviser on your personal situation. Should you choose to give a gift of stock, please contact me so we can watch for it to arrive in our account. Many times, stock gifts do not come in with your name attached. I want to make sure you get the credit and thanks that you deserve.

### Q: "Can a donation to the museum serve as the required minimum distribution without being taxable income?"

**A:** Yes. I highly recommend you reach out to the financial advisor who facilitates your required minimum distribution (RMD). You must be age 70 1/2 or older to take advantage of this opportunity. The institution that administers your RMD

must send the gift straight to the museum to avoid paying taxes on that amount. Your gift decreases your taxable income for the year. For most people, the deadline on taking your RMD is Dec. 31. Please consult your financial advisor on your particular situation. This is a wonderful opportunity to help us in a very difficult year while paying attention to your personal taxes.

I'd like to close by saying that your gift, no matter how great or how small, will help the Eiteljorg come out on the other side of this pandemic. We are learning a lot during this time. With your help, we will come out stronger, more resilient and ready to present the wonderful art, history and cultures of Native peoples and the American West in the way you have become accustomed.

Please do not hesitate to reach out to me with any questions. Have a safe and happy year.

*Nataly*  
Nataly Lowder

Vice President for Advancement  
317.275.1311  
[nlowder@eiteljorg.com](mailto:nlowder@eiteljorg.com)

Eiteljorg Museum  
500 W. Washington St.  
Indianapolis, IN 46204  
[www.eiteljorg.org](http://www.eiteljorg.org)

## Thank you to the following donors for memberships and gifts received from April 1-July 31, 2020.

Due to space limitations, only contributions of \$100 or more are listed — with the exception of gifts in honor or in memory. If your name is not listed as you would like it to be, please accept our apologies and call 317.275.1311.

### Membership gifts (\$100 and above)

#### Vision Circle

\$25,000 or more annual cumulative giving  
Steve Cagle  
Cathy Turner

#### Chairperson's Circle

\$10,000-\$24,999 annual cumulative giving  
Dr. Elizabeth A. Beck  
Gordon and Llura\* Gund  
Virginia Merkel  
Mel and Joan Perelman

#### President's Society

\$5,000-\$9,999 annual cumulative giving  
John and Karen Colglazier  
Ann W. King  
Ellen M. Reed  
Marion Wolen

#### Golden Eagle Society

\$2,500-\$4,999 annual cumulative giving  
Dawn and Tom Bennett  
Terry and Connie Marbach  
Joseph and Gita Osborne  
Jay and Sally Peacock  
Dr. Newell O. Pugh, Jr.  
Dr. and Mrs. Randall G. Rowland  
Mr. and Mrs. Robert E. Schloss  
John Vanausdall

#### Eagle Society

\$1,500-\$2,499  
Georgia Buchanan  
LaMarr Easter and Cary Neeley  
Chris and Kimberley Eck  
Jane S. Farber  
Nataly and Jonathan Lowder  
Delores Muller  
Amanda and Eric Rail  
Robert and Barbara Shortle  
Frannie Sing  
Michael P. Skehan  
Diane G. Thompson  
Lindsay and Andrew Thornton  
William and Kimberly Witchger II  
Dr. Oksana and Peter Withey

#### Advocate Members

\$1,000-\$1,499  
Mr. and Mrs. William E. Stanley

#### Patron Members

\$500-\$999  
Dr. and Mrs. Thomas A. Broadie  
Douglas Hale and Meg Hardison  
Susan and Mark Hoffert

Leonard and Dorene Hoops  
Kay F. Koch  
Jackie and Martin Kuntz  
Gail Plater and William M. Plater  
Marjorie and Karl Schnelle

#### Sustaining Members \$250-\$499

John and Joann Birdzell  
Patricia and Jesse Clark  
Dr. Joseph and Mrs. Eleanor Hingtgen  
Robert and Sara Le Bien  
Laurette McCarthy and Harold Baker  
Col. James Mutter and General Carol Mutter  
Jane R. Nolan  
Erin and Kyle Oliver  
Joseph and Sharon Olson  
Terri Parsons  
Ben Pauley  
Gaye and Kelsey Rardon  
John Lawrence Richardt  
Steven and Andrea Richel  
James W. and Nancy C. Smith  
Ann and Steve Smith  
Linda and Thomas Stark  
James P. White

#### Contributing Members \$125-\$249

H. Dean and Donna Andrews  
Maryann and Chet Blanton  
Dr. Nancy Branyas and Mr. Vernon Petri  
Eric and Dana Brock  
Marsha Brown  
Wayne Craig  
John and Susan Davis  
Bill and Coleen Ehrig  
Dr. Paul Filipkowski and Roberta Tureen  
Kevin and Cindy Fitzgerald  
Dale and Janet Fletcher  
Charles and Louise Gay  
Ms. Catherine Gibbs  
Dr. Gary and Sharon Graff  
Austin and Christine Greene  
Dr. and Mrs. Andrew Greenspan  
George Harding  
Dr. Mark Heiden and Dr. Mary Ellen Lennon  
Patricia Herron and Russell Rumansoff  
Gary and Katie Hoefle  
Jane Howard  
Marilyn Jones  
Richard Judy and Jane Lommel  
Trudy and Thomas Kaufman  
Keith and Gloria Keppel  
Christy Krieg and Patrick Carroll  
Lynn Lambuth  
Jordan and Elizabeth Lewis  
Jeff McGuire  
Myles Minton  
Patricia S. Mohler  
David Montgomery and Ben Cusack  
Michael and Brenda Noone  
Wendy and Bruce Pallman  
Robin and Gregory Pemberton  
Noreen and Alan Poorman  
Dr. and Mrs. Robert Pribush  
Robert and Martha Ravensberg  
Robert and Janet Redmond

Dale and Mary Jo Roberts  
William Rosenbaum and Mimi Brittingham  
James and Maureen Ross  
Mr. Michael Sawyers  
Dianne Seibert  
Frank E. Smurlo, Jr. and Frank E. Smurlo, III  
John and Lena Snethen  
Justin Sufan  
Aviva Tavel  
Gerald and Judith Thomas  
Frank and Jane Walker  
Ken Wherry  
Mr. Gordon White  
James and Sara Williams  
H. David and Jane Wright  
Doug Yost and Kim Mathews  
Mark Zwoyer and Peggy McDonald

#### Donors

All memorial and honorarium gifts are listed. Gifts in other categories are for \$100 or more.

#### Annual Fund and other designated gifts

Amazon Smiles  
Viki and Bruce Anderson  
Anonymous (6)  
Jeffrey and Christine Arnold  
Don and Ginger Bievenour  
Laura E. Bramble  
Paul and Margarete Brandenburg  
Dr. and Mrs. Thomas A. Broadie  
Tom and Angie Bromstrup  
Ann Burgess  
Hanni and William Cramer  
Angie and Dick Darlington  
Roger and Mindy Eiteljorg  
Tom and Sharon Funk  
Ellen Galanis  
James and Lisa Harkness  
Joy and Dan Hess  
Dr. Joseph and Mrs. Eleanor Hingtgen  
Pam and Gary Jursik  
Kay F. Koch  
Lezlie Laxton  
Jim and Jan Mellott  
Dianne and James Moss  
Alisa Nordholt-Dean and Dave Dean  
Gita and Joseph Osborne  
Mr. Hilary Raab, Jr.  
William K. Ransom  
Nancy Ray Ross  
Norman Sandfield  
Phillip Scarpino and Virginia Garner  
Jack and Barbara Simon  
James R. Sparks  
Chris and Whitney Trede  
Clara Trusty  
Linda and Mark Viehmann  
Frank and Jane Walker  
Jim and Karen Wolf  
Pamela Wright

#### Gifts in Honor and Memory

received from April 1-July 31, 2020  
*In Honor of Matt Askren*  
Erinn Wold  
*In Honor of Johanna Blume*  
Erinn Wold

*In Honor of Mary Beth Braitman and her service as chair of the museum's board of directors*

Pat and Robert Anker  
Steve Cagle  
Angie and Dick Darlington  
Roger and Mindy Eiteljorg  
Drs. Richard and Becky Feldman  
Jasmin French  
Tim Garnett and Peter Slaymaker  
Patty and Thomas Gibbs  
Karen and Joseph Glaser  
Fritz R. and Sandy Gardner  
Fred and Angie Green  
Gloria Griesinger  
James and Sara Gutting  
Tom and Sue Hoback  
Stan and Sandy Hurt  
Chris Katterjohn and Dona Siebler  
Benny and Vicky Ko  
Kelly and Stephan Masoncup  
Susie and Howard Maxwell  
Virginia Merkel

Gita and Joseph Osborne  
Afshan and Adam Paarlberg  
Hutch and Kevena Schumaker  
Tara and Marc Sciscoe  
Lindsay and Andrew Thornton  
John W. Timothy, Jr., M.D.  
Martha and John Tynan  
John Vanausdall  
Barbara West  
Don and Angela Woodley

*In Honor of Deanna DeBrier's April Birthday*  
Patt Norton

*In Honor of the Eiteljorg Staff*  
Dr. Charles R. Bantz and

Dr. Sandra Petronio  
Michael and Mary Haas  
Larry and Connie Kane  
Susan and Mike Lewis  
John Vanausdall

*In Honor of P.M.G. Harris*  
Prof. Marianne Wokeck

*In Memory of Elizabeth "Buff" Sutherland*  
The Terry and Carolyn Anker Family

*In Memory of Barbara Brewer Clark*  
John Vanausdall

*In Memory of Christel DeHaan*  
John Vanausdall

*In Memory of Jan Eason*  
Erinn Wold

*In Memory of Llura Gund*  
John Vanausdall

*In Memory of Elberta Huffman*  
Sheila and Richard Jackson

*In Memory of Debbie Hyde*  
John Vanausdall

*In Memory of Nakotah LaRance*  
John Vanausdall

*In Memory of Molly Neptune*  
John Vanausdall

*In Memory of Cody Newcomb*  
John Vanausdall

*In Memory of Michael O'Brien*  
John Vanausdall



*In Memory of Harriet Sebald*  
Ann and Steve Berthe  
Jane and Tim Davis  
Ms. Hilda Hecker  
Karen and Peter Reist

*In Memory of Sara Stoops*  
Susan and Gary Rice

*In Memory of Gil Waldman*  
John Vanausdall

*In Memory of Richard Wood*  
John Vanausdall

*In Memory of Greg Zehner*  
Sharon Mills  
Erinn Wold

#### Foundation, corporation and government gifts

\$400,000 and above  
Lilly Endowment, Inc.

\$50,000-\$399,999  
R.B. Annis Educational Foundation  
Arts Council and the City of

Indianapolis  
Allen Whitehill Clowes Charitable  
Foundation, Inc.

\$25,000-\$49,999  
Indiana Arts Commission  
JP Morgan Chase Bank  
The Sunrise Foundation a fund of the  
Indianapolis Foundation

\$10,000-\$24,999  
Central Indiana Community  
Foundation  
Nicholas H. Noyes, Jr. Memorial  
Foundation, Inc.  
E.D. Frenzel Family Charitable Lead  
Trust

\$5,000-\$9,999  
Ayres Foundation, Inc.  
Care Institute Group, Inc.  
United Way

\$1,000-\$4,999  
The Glick Family Foundation  
The Penrod Society

#### Matching gift companies

Capital Group  
Eli Lilly and Company Foundation, Inc.  
IBM Corporation Matching Grants  
Program

#### In-Kind donations

Pat and Robert Anker  
Cision  
Faegre Drinker Biddle & Reath LLP  
(Faegre Drinker)

Honeymoon Image & Design  
Stuart's Household Furniture Moving  
and Storage, Inc.

#### Western Art Society gifts

David and Gisele Found  
Ryan C. Fuhrmann

#### Project 2021 Endowment

Robert\* and Shirley\* Muller Estate  
Gannett  
P.E. MacAllister\* Estate

#### Project 2021 capital campaign

Anonymous  
Jasmin French

Fritz R. and Sandy Gordner  
Virginia Merkel  
Noreen and Alan Poorman  
R.B. Annis Educational Foundation  
Dr. and Mrs. Randall G. Rowland  
Chad Slaughter

#### Exhibitions and Special Events

##### Quest for the West® Art Show and Sale

Presented by  
The Western Art Society

Sponsored by  
Dr. Caryn C. Anderson and  
Mr. David Anderson  
Phyllis Cockerill

Angie and Dick Darlington  
L.G. and Alyce Edwards  
Mr. Alan Gerry

Patty and Thomas Gibbs  
Stan and Sandy Hurt  
Carla and Mike Leppert

Stephen and Jane Marmon  
Kelly and Stephan Masoncup  
Mickey and Janie Maurer

Mel and Joan Perelman  
Tom and Evelyn Seeley  
Cathy Turner

Bill and Roberta Witchger  
Stephen and Sharon Zimmerman

With additional support from  
BMO Harris Bank  
Chris and Augie Mascari

## IN MEMORIAM

The Eiteljorg recently lost longtime supporters who each left a lasting impact on the museum:

#### Llura (Lulie) Gund, 1941-2020

As philanthropists and advocates for the arts, Lulie Gund and her husband Gordon Gund have been friends of the Eiteljorg Museum since 2002. The Gund Family (Gordon and his siblings) gave their family's nationally important collection of Western American art to the Eiteljorg, and in honor of this gift, the Gund Gallery of Western Art was created in 2005. Since that time, Mr. and Mrs. Gund have remained generous supporters of the museum, its exhibits, collections and programs, and they both served on the Eiteljorg's National Advisory Board. Mrs. Gund was deeply involved in the Gund family's foundation that supported many charitable causes. She also co-founded an organization that funds medical research to treat and cure degenerative eye diseases, the Foundation Fighting Blindness. Mrs. Gund did much to make the world a better place. She died March 15.



#### Mitch Battese (Prairie Band Potawatomi Nation/Chickasaw Tribe of Oklahoma), 1951-2020

Longtime visitors to the Eiteljorg Indian Market and Festival will recall the beautiful watercolor paintings of artist Frank "Mitch" Battese. A lifelong artist, Mitch encouraged interest in Native American art and in young artists pursuing it as part of their cultures. Holding a master's degree in social work, Mitch Battese worked as a clinical social worker for the U.S. Indian Health Service until his retirement in 2014. Mitch showed and sold his artworks at Indian Market for many years. He died May 11 in his Lawrence, Kansas home, and is survived by his wife Patty, three sons, four grandchildren and a great-grandchild.



Frank (Mitch) Battese  
(Prairie Band Potawatomi Nation/  
Chickasaw Tribe of Oklahoma)  
Sacred Camp, 2020  
Watercolor, 18 x 24 inches  
Image courtesy of the artist

#### Nakotah LaRance (Hopi/Tena/Assiniboine), 1989-2020

Astounding is the only way to describe Nakotah LaRance's hoop dancing. With high-energy gymnastic moves and choreography, he twirled spinning hoops to form creative shapes. A world-champion hoop dancer, Nakotah performed at the Eiteljorg Indian Market and Festival multiple years, most recently in 2016, leaving the crowds of spectators amazed. His father, Steve LaRance, is a longtime Indian Market artist. Nakotah LaRance's dancing and performing ability led to him touring with Cirque du Soleil. Until his death July 12 in a climbing accident, Nakotah had taught hoop dancing to Native youth at the nonprofit Lightning Boys Foundation in northern New Mexico, passing his art form to a new generation of dancers.



#### Robert P. Hunter, Jr., 1935-2020

Bob Hunter and his wife Barbara were two of the most loyal supporters of the Eiteljorg's Quest for the West® Art Show and Sale. Museum members since 2005, they attended nearly every Quest gathering since its inception. The Hunters, of Alpharetta, Georgia, were longtime patrons of the Booth Western Art Museum in Cartersville, Georgia; and through that connection they helped create a following for Quest for the West® among art collectors in the Atlanta area. Bob and Barbara Hunter hosted events for the Eiteljorg, and welcomed members of the Western Art Society passing through the Atlanta area. Bob Hunter, who died Aug. 17, was a good friend to the Eiteljorg.



The Eiteljorg Museum staff send their condolences to the families of Llura Gund, Mitch Battese, Nakotah LaRance and Robert Hunter.

## Happy trails to retiring Deborah Kish, who managed volunteers

By Lezlie Laxton, Eiteljorg director of human resources

If you have ever volunteered at the Eiteljorg, you are familiar with Deborah Kish. Deborah began her time at the museum in 2008 as the manager of volunteer services and will be retiring in October 2020. Deborah brought strong organizational skills to the museum, along with a fresh perspective and enthusiasm, and made a big impact on reorganizing the volunteer program. She was essential in guide and volunteer recruiting, and scheduling all our volunteers for *Jingle Rails*, Indian Market and Festival and many other events. Over the years, under her leadership, the volunteer program has grown to an average of 432 volunteers per year, and the volunteers have given more than 181,000 hours of service to the museum. She recruited and retained the strong corps of volunteers while recognizing their invaluable contributions.



Deborah has had a long career in volunteer and community services, including her work with the Central Indiana Association of Volunteer Administrators, Junior League of Indianapolis and the Indianapolis Symphony Orchestra. Please join us in celebrating Deborah's retirement and wishing her well.

## Museum marketing team wins two statewide awards

In August, the Eiteljorg's Marketing and Communications department competed in the Pinnacle Awards contest and won two statewide awards for excellence, presented by the Public Relations Society of America, Hoosier Chapter. The competition recognizes the top projects and programs in the public relations industry in Indiana.

The Eiteljorg's *Storyteller* magazine won the Award of Honor in the magazine category, for the second year in a row. Judges' comments: "Looks like the magazine helped increase attendance at events, and increased magazine subscribers, so sounds like a success .... Solid execution."

The redesign of the museum's website, **Eiteljorg.org**, won the Award of Honor in the electronic/digital communications category. Judges' comments: "Really nice layout of website .... Looks very professional."

The museum marketing team includes marketing and communications director Bert Beiswanger, public relations manager and *Storyteller* editor Bryan Corbin, digital marketing manager Hyacinth Rucker, and Mike Fasig of Honeymoon Image & Design. Iconic Digital of Fishers, Ind., assisted with the website redesign.



Eiteljorg Museum of  
American Indians and Western Art  
Telling Amazing Stories



**VISIT** the Eiteljorg Museum and experience compelling Native American and Western art and the beautiful museum garden and grounds.

**JOIN** as a museum member: <https://eiteljorg.org/visit/tickets-discounts/membership/>

**RENEW** and upgrade your museum membership:

Contact Cassandra Sanborn at 317.275.1360 or [csanborn@eiteljorg.com](mailto:csanborn@eiteljorg.com)

**DONATE** to the museum: <https://eiteljorg.org/give/donate/>

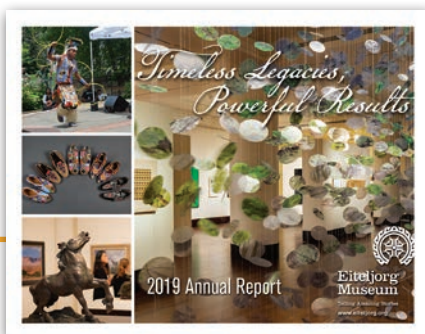
Contact Nataly Lowder at 317.275.1311 or [nlowder@eiteljorg.com](mailto:nlowder@eiteljorg.com)

**SHOP** at the Frank and Katrina Basile Museum Store: <https://eiteljorg.org/visit/shop/>

Contact 317.275.1300 or [store@eiteljorg.com](mailto:store@eiteljorg.com)

**DINE** at the Museum Café: <https://eiteljorg.org/visit/cafe/>

**EXPLORE** our programs and collections at [www.eiteljorg.org](http://www.eiteljorg.org), follow us on social media and learn about our rental event spaces for your next event.



Visit <https://eiteljorg.org/our-story/board/> to read the Eiteljorg's 2019 Annual Report.



## Eiteljorg Museum of American Indians and Western Art

White River State Park • 500 W. Washington St.  
Indianapolis, IN 46204  
[www.eiteljorg.org](http://www.eiteljorg.org)

COMING IN THE FEBRUARY ISSUE

### **LAUGHTER AND RESILIENCE: HUMOR IN NATIVE AMERICAN ART** MAY 23–AUG 8, 2021

For centuries, humor has played a vital role among many Native American tribes as an important form of artistic expression. Native artists past and present employ humor in a wide variety of ways, using a range of artistic media. Visit the Eiteljorg and experience this fascinating and surprising exhibition — curated by the Wheelwright Museum of the American Indian in Santa Fe, N.M. — that examines Indigenous humor in all its forms.



Heidi Brandow, b.1981 (Diné/  
Kanaka Maoli)  
*Cute Monster Series*, 2015  
Mixed media  
10.25 inches x 24 inches  
Image by Addison Doty, courtesy of  
the Wheelwright Museum of the  
American Indian

Fredrick Cruz, b. 1961 (Tohono  
O'odham)  
*Untitled (Dog with Hat)*, ca. 2009  
White and green yucca, devil's claw,  
and beargrass  
10.25 inches x 8.46 inches  
Image by Addison Doty, courtesy of  
the Wheelwright Museum of the  
American Indian

Sponsorships for Eiteljorg exhibitions and programs are available. Contact Susan St. Angelo at 317.275.1333 or [sstangelo@eiteljorg.com](mailto:ssstangelo@eiteljorg.com).

*Honoring Women*



Stay connected with the Eiteljorg on social media and at [eiteljorg.org](http://eiteljorg.org). You can also sign up for our weekly e-newsletter at [eiteljorg.org](http://eiteljorg.org).

For general information about the Eiteljorg Museum, call **317.636.9378**.

